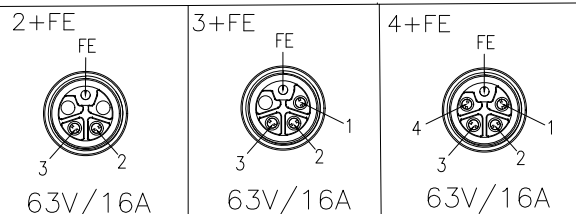


THIS DRAWING AND THE DATA DISCLOSED HEREIN OR HEREWITH IS NOT TO BE REPRODUCED USED OR DISCLOSED IN WHOLE OR IN PART TO ANYONE WITHOUT THE PERMISSION OF JESS-LINK PRODUCTS CO.,LTD.(JPC)

CUSTOMER DRAWING

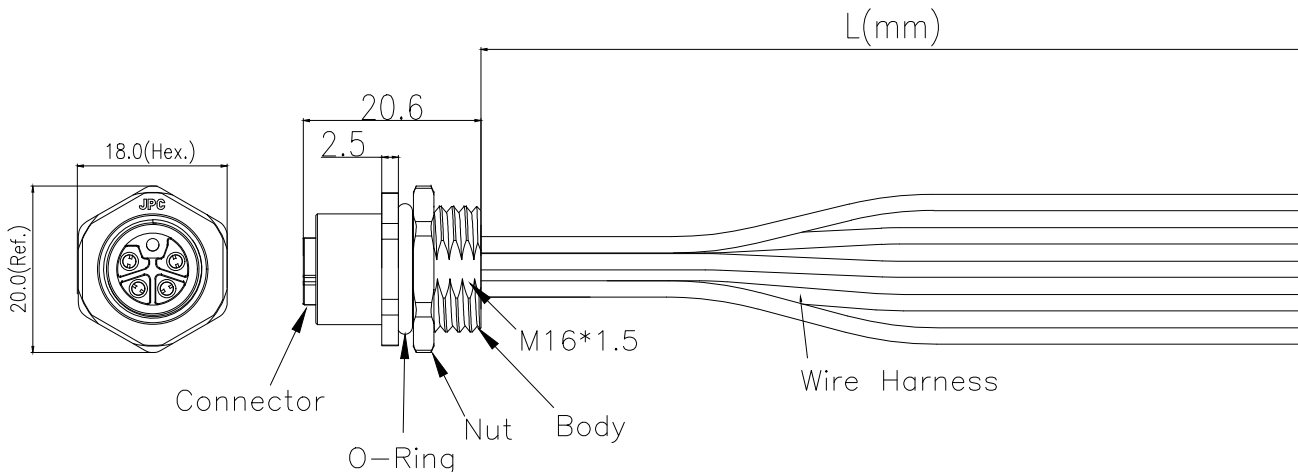
REV.	ECN NO.	DESCRIPTION	MDF'D	APP'D	DATE
A1		First Release	Ray	George	09/09/2024
A2		Update Series Product P/N	Ray	George	09/20/2024

Pin Assignment Front View



Pin Out

Pin	Wire Color	Pin	Wire Color	Pin	Wire Color
1	----	1	Brown	1	Brown
2	White	2	White	2	White
3	Blue	3	Blue	3	Blue
4	----	4	----	4	Gray
PE	Pink	PE	Pink	PE	Pink



Notes:

- Connector :
 - Housing : PA66 , Black , UL94V-0
 - Pin : Copper alloy , Gold plated
 - O-Ring : Silicone Rubber , Black
 - Body : Zinc Alloy , Ni plated
 - Nut : Zinc Alloy , Ni plated
- Waterproof Rate : IP67 Mated.
- RoHS Compliant
- Wire Harness : UL10198 14AWG
- Wire Length Tolerance :
 - 150mm < L ≤ 300mm : ±15mm
 - 300mm < L ≤ 1000mm : ±20mm
 - 1000mm < L ≤ 1500mm : +50mm/-0mm

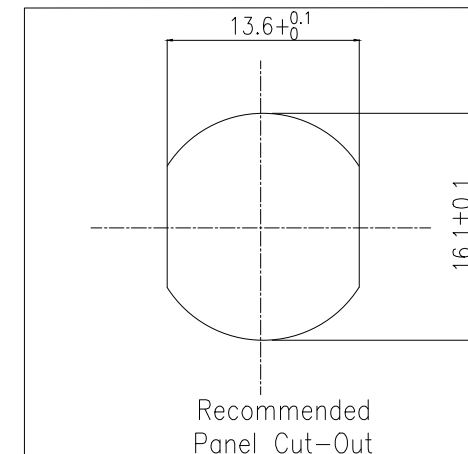
P/N:

L-MN12-XXP-FEHS-SR-7BMXX

XX : No. Of Pin

XX : Wire Length

- 10 : 100mm
- 15 : 150mm
- A0 : 1000mm
- A5 : 1500mm



Recommended Panel Cut-Out

RoHS COMPLIANT	Unit : mm	PROJECTION		JPC connectivity	
	GENERAL TOLERANCES: (UNLESS SPECIFIED)	D.R. 09/09/2024			
	0 = ±.50	CH.K 09/09/2024		M12 L code Female Connector Rear Fastened	
	0.0 = ±.25 0.00 = ±.15 0.000 = ±.05 0' = ±.2' 0.0' = ±.1'	APV.D 09/09/2024		SCALE -	SIZE A4
					REV. A2
					SHEET 1 OF 1